



ARIENS
THE KING OF SNOW

44" Brush Attachment

Parts Manual

Model:

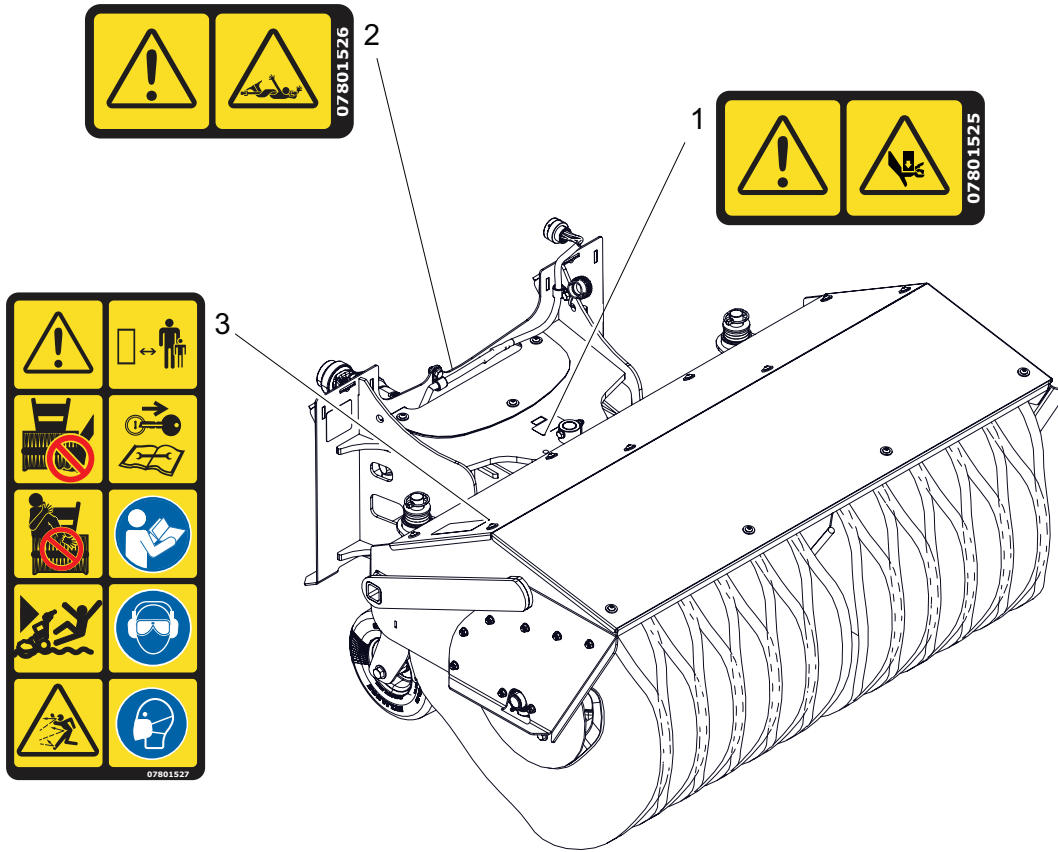
851004 – 44" Brush Attachment
(SN 000101 +)

TABLE OF CONTENTS

Decals.....	3
Brush Mount and Actuator.....	4
Wiring Diagram.....	5
Brush Drive.....	6
Brush Frame and Wheels.....	7
Brush Head.....	8

DECALS

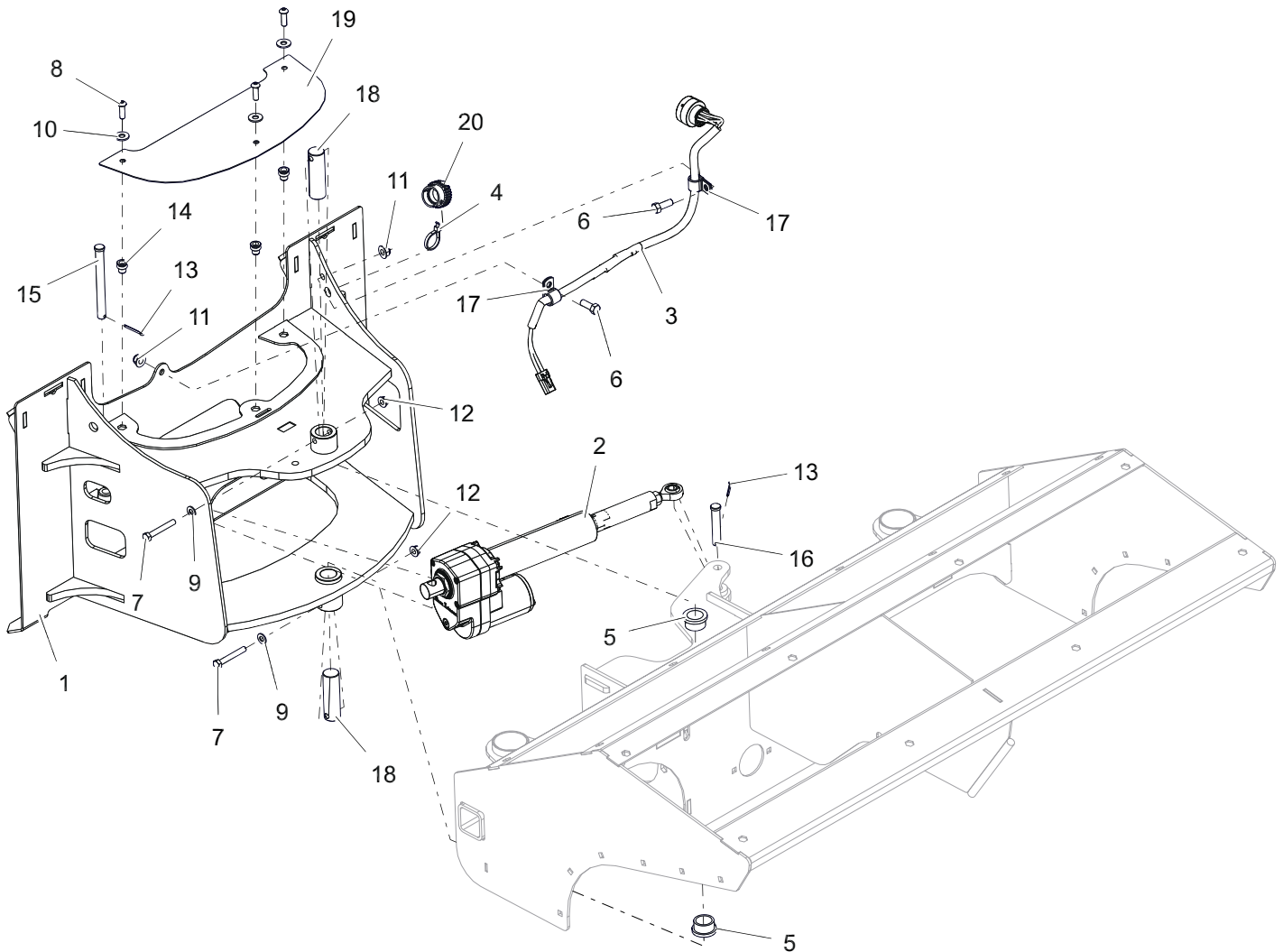
Model 851004



BOM ID	Number	Qty	Description
1	07801525	1	DECAL, SAFETY - PINCH POINT
2	07801526	1	DECAL, SAFETY - ROTATING SHAFT
3	07801527	1	DECAL, SAFETY - BRUSH HOUSING

BRUSH MOUNT AND ACTUATOR

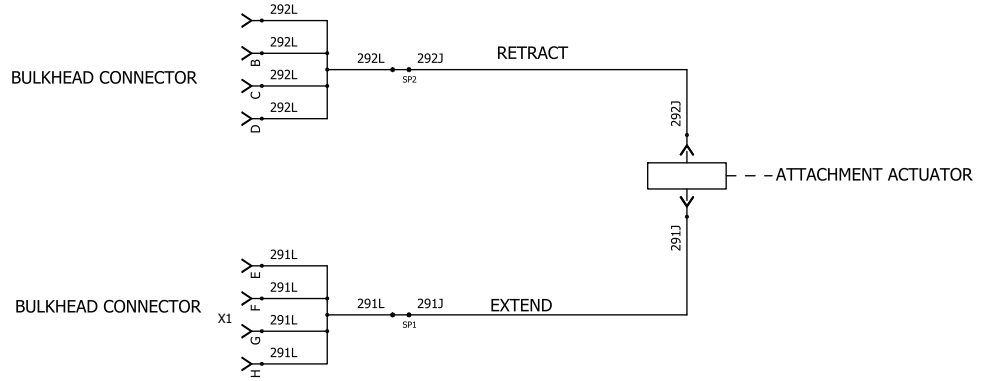
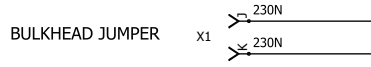
Model 851004



BOM ID	Number	Qty	Description
1	55101900	1	WLDMT, BRUSH - W/DECAL
2	09454600	1	ACTUATOR, BRUSH
3	09444700	1	HARNESS, BRUSH
4	N/A	1	TIE, CABLE - 11.80" LONG
5	05400803	2	FLANGE, SLEEVE BEARING, OIL-EMBEDDED
6	05901711	2	BLT, HEX 0.375-16X1 GR5 ZC120
7	05901806	2	BLT, HEX 0.3125-18X2.25 GR5 ZCC
8	05901840	3	SCR,BTNHD .31-18X1.00 ZCC
9	06401017	2	WSHR-FL-STL 0.344X0.688X0.065 ZC120
10	06401023	3	WSHR-FL-STL 0.375X0.875X0.083 ZC120
11	06500726	2	NUT, LK-NYL-FLG .38-16 GR5 ZC120
12	06500809	2	NUT, LK-NYL-FLG .31-18 GR5 ZC120
13	06700212	2	PIN, CTR .12X1.25 EXTPRSQCT ZC120
14	06800210	3	RVT, HEX 5/16-18 SHORT
15	06800212	1	PIN, CLEVIS .50 X 4.75
16	06800213	1	PIN, CLEVIS .50 X 2.375
17	07002003	2	CLAMP, HARNESS - "P" (5/8" ID)
18	09452100	2	SHAFT, PIVOT
19	09454100	1	PLATE, COVER
20	21583700	1	CAP, CONNECTOR - AHDC04-18

WIRING DIAGRAM

Model 851004

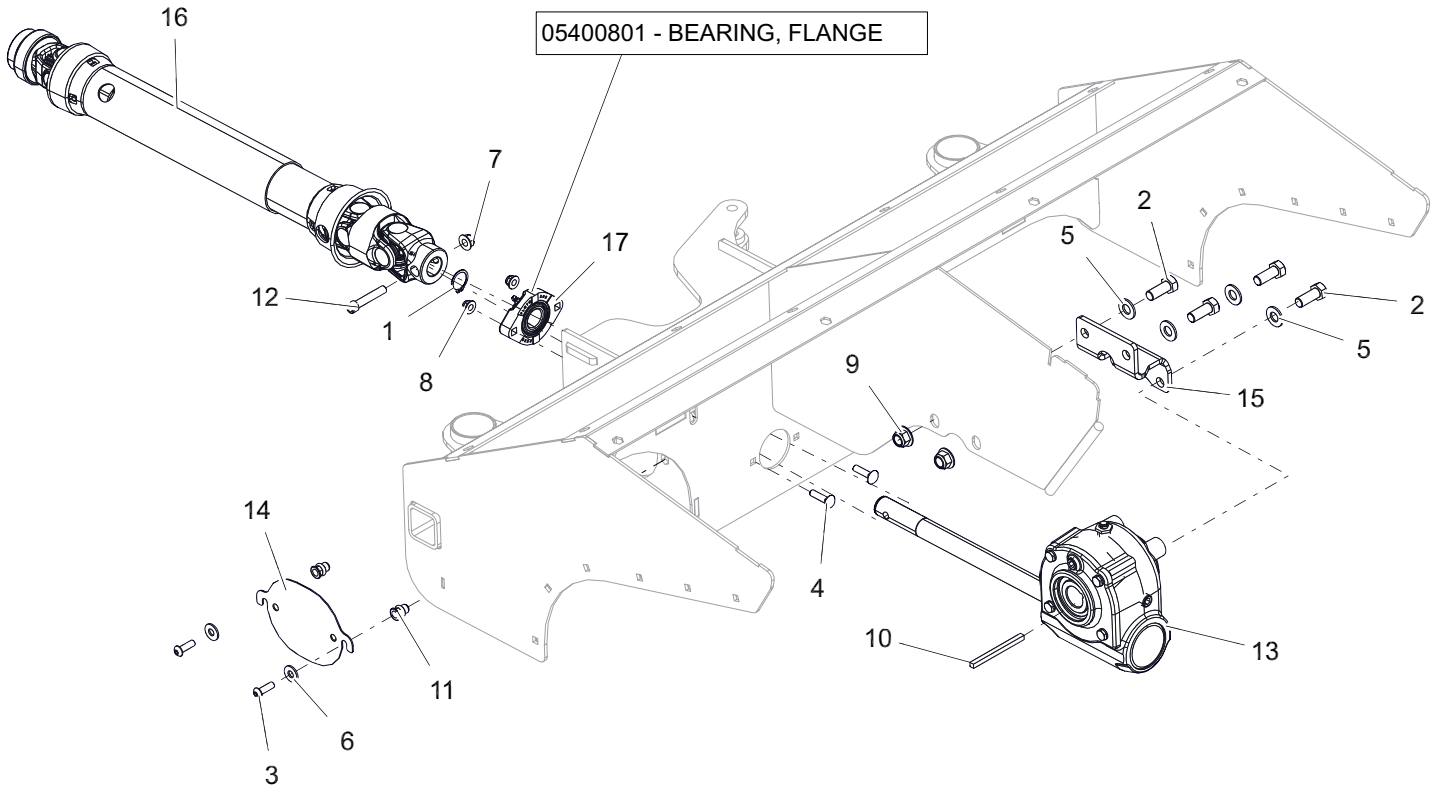


SUFFIC LETTER	METRIC (mm ²)	WIRE SIZE	LOAD RATING (AMPS)
A		4/0	300-350
B		3/0	250-299
C	62	2/0	200-249
D	50	0	150-199
E	40	1	100-149
F	32	2	75-99
G	19	4	50-74
H	13	6	40-49

SUFFIC LETTER	METRIC (mm ²)	WIRE SIZE	LOAD RATING (AMPS)
I	8	8	30-39
J	5	10	20-29
K	3	12	15-19
L	2	14	10-14
M	1	16	5-9
N	0.8	18	3-4
O	0.5	20	1-2
P	0.35	22	0-1

BRUSH DRIVE

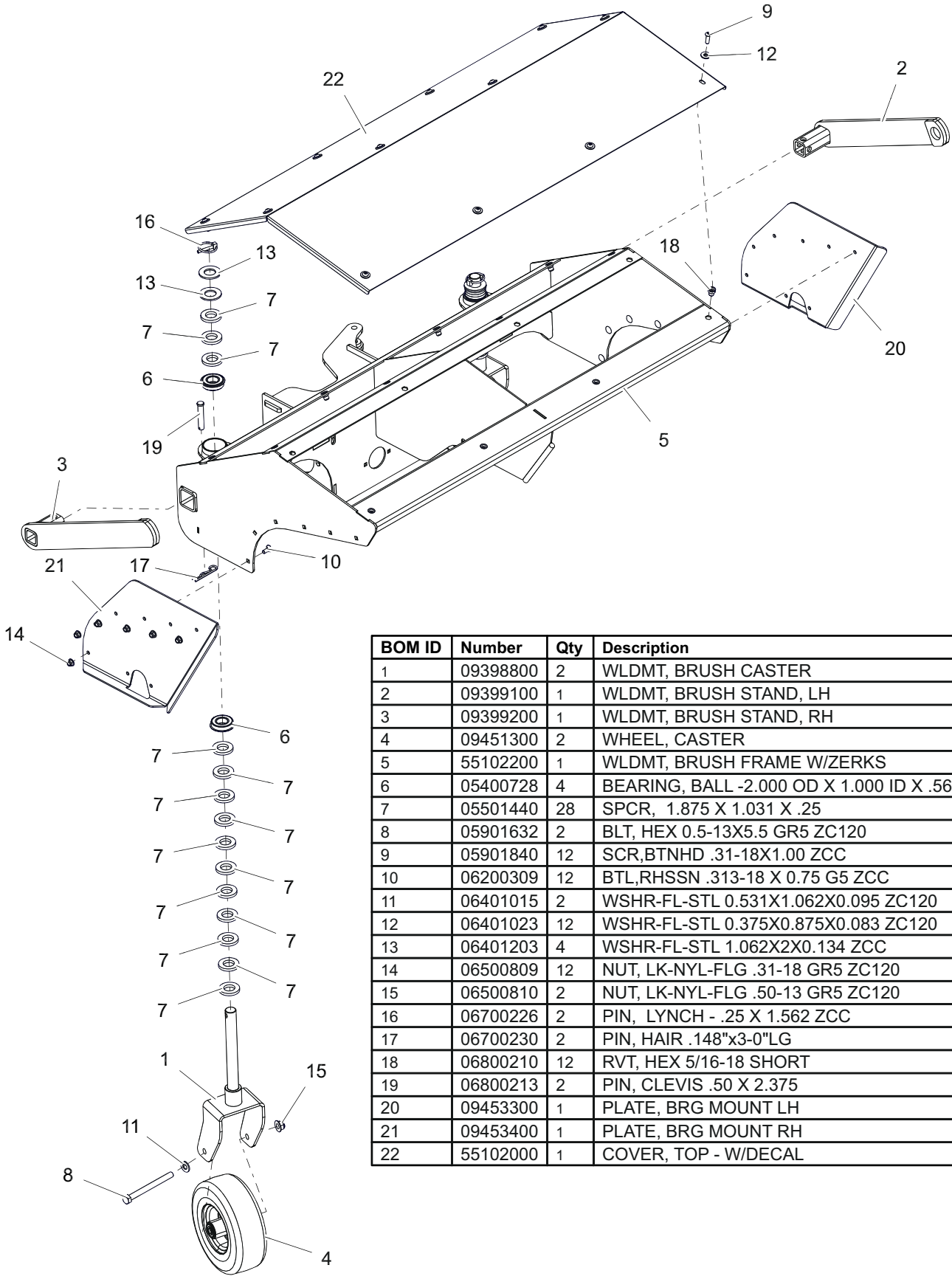
Model 851004



BOM ID	Number	Qty	Description
1	05700231	1	RING, RETAINING
2	05901637	4	BLT, HEX 0.5-13X1.25 GR5 ZC120
3	05901840	4	SCR,BTNHD .31-18X1.00 ZCC
4	06200407	2	BTL,RHSN .313-18 X 1.25 G5 ZCC
5	06401015	4	WSHR-FL-STL 0.531X1.062X0.095 ZC120
6	06401023	4	WSHR-FL-STL 0.375X0.875X0.083 ZC120
7	06500726	1	NUT, LK-NYL-FLG .38-16 GR5 ZC120
8	06500809	2	NUT, LK-NYL-FLG .31-18 GR5 ZC120
9	06500810	2	NUT, LK-NYL-FLG .50-13 GR5 ZC120
10	06600003	1	KEY-SQ .250X.250X3.50
11	07001936	4	RVT, HEX 5/16-18 LONG
12	07002132	1	SCR, SKH - .375-16X2.0 ZC120
13	09451400	1	GEARBOX, WORM BRUSH
14	09454200	2	PLATE, COVER
15	09660700	1	PLATE, BRKT - GEARBOX
16	55102100	1	SHAFT, PTO - BRUSH
17	55102400	1	KIT, FLANGE BEARING W/HARDWARE

BRUSH FRAME AND WHEELS

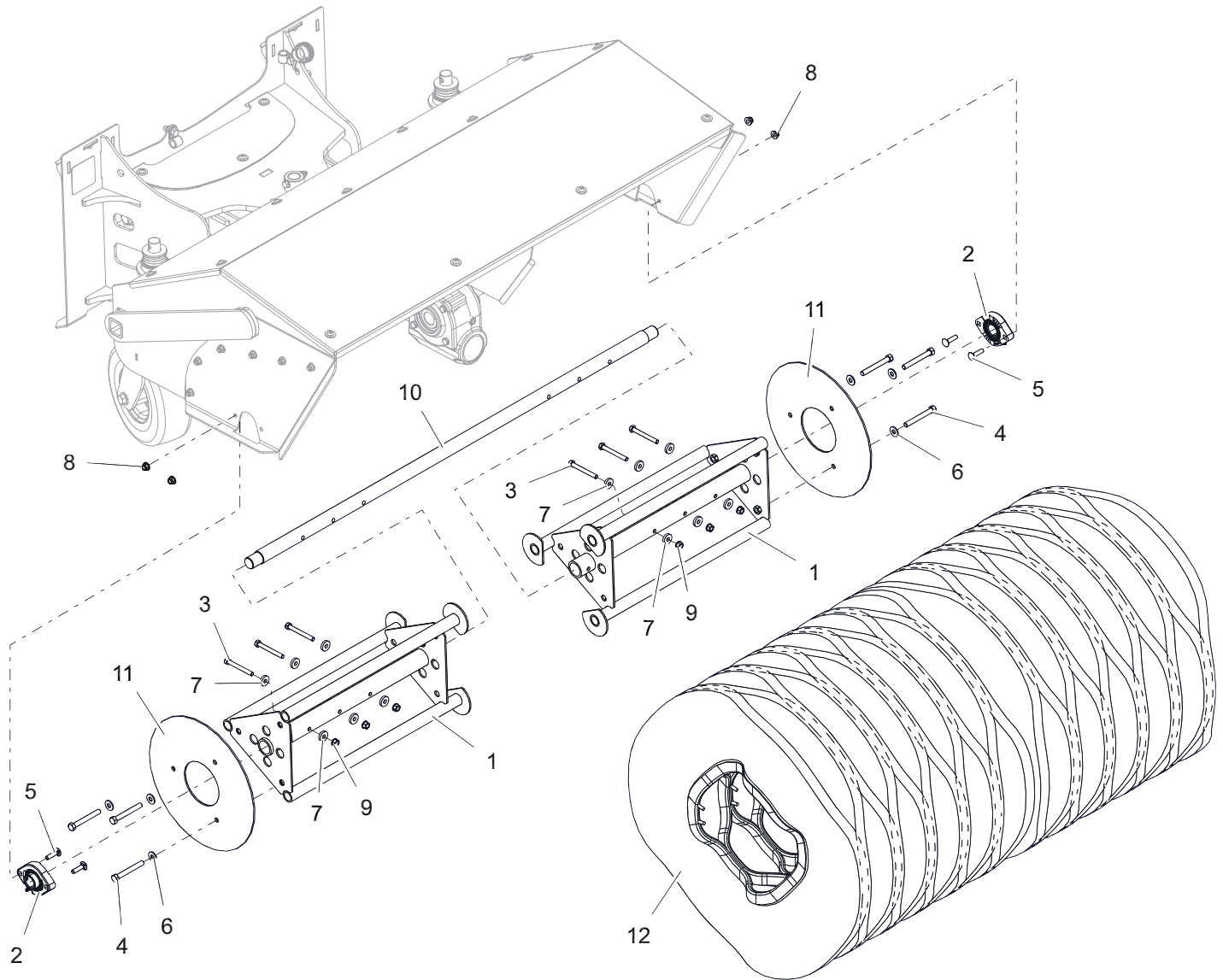
Model 851004



BOM ID	Number	Qty	Description
1	09398800	2	WLDMT, BRUSH CASTER
2	09399100	1	WLDMT, BRUSH STAND, LH
3	09399200	1	WLDMT, BRUSH STAND, RH
4	09451300	2	WHEEL, CASTER
5	55102200	1	WLDMT, BRUSH FRAME W/ZERKS
6	05400728	4	BEARING, BALL -2.000 OD X 1.000 ID X .5625 W/RING
7	05501440	28	SPCR, 1.875 X 1.031 X .25
8	05901632	2	BLT, HEX 0.5-13X5.5 GR5 ZC120
9	05901840	12	SCR,BTNHD .31-18X1.00 ZCC
10	06200309	12	BTL,RHSSN .313-18 X 0.75 G5 ZCC
11	06401015	2	WSHR-FL-STL 0.531X1.062X0.095 ZC120
12	06401023	12	WSHR-FL-STL 0.375X0.875X0.083 ZC120
13	06401203	4	WSHR-FL-STL 1.062X2X0.134 ZCC
14	06500809	12	NUT, LK-NYL-FLG .31-18 GR5 ZC120
15	06500810	2	NUT, LK-NYL-FLG .50-13 GR5 ZC120
16	06700226	2	PIN, LYNCH - .25 X 1.562 ZCC
17	06700230	2	PIN, HAIR .148"x3-0"LG
18	06800210	12	RVT, HEX 5/16-18 SHORT
19	06800213	2	PIN, CLEVIS .50 X 2.375
20	09453300	1	PLATE, BRG MOUNT LH
21	09453400	1	PLATE, BRG MOUNT RH
22	55102000	1	COVER, TOP - W/DECAL

BRUSH HEAD

Model 851004



BOM ID	Number	Qty	Description
1	09451200	2	WLDMT, DRIVE CORE
2	05400801	2	BEARING, FLANGE
3	05901807	6	BLT, HEX 0.3125-18X2.75 GR5 ZCC
4	05901815	6	BLT, HEX 0.375-16X3F GR5 ZCC
5	06200407	4	BTL,RHSN .313-18 X 1.25 G5 ZCC
6	06401023	6	WSHR-FL-STL 0.375X0.875X0.083 ZC120
7	06401103	12	WSHR-FL-STL 0.328X0.87X0.179 ZCC
8	06500809	4	NUT, LK-NYL-FLG .31-18 GR5 ZC120
9	06500840	6	NUT, FLG-CTR LK .312-18 GR5 ZCC
10	09451000	1	SHAFT, BRUSH
11	09454500	2	PLATE, END RETAINER
12	75100500	22	BRISTLE REPLACEMENT - SET OF 22

NOTES



ARIENS
THE KING OF SNOW

655 West Ryan Street
Brillion, WI 54110

ariensco.com



ARIENS | CO